

PARTITION

MUSIQUE PRIM
CHANT CHORAL
2020

BE - BOP ÉRA

Une enquête de John Chatterton

Violon



radiofrance



l'école des loisirs



PARTITION

MUSIQUE PRIM
CHANT CHORAL
2020

Be-Bopéra

UNE ENQUÊTE DE JOHN CHATTERTON

Violon

Un mur gris de la ville, mesures 1 à 83.

Les éclairagistes, mesures 84 à 137.

Chat noir chic et stylé, mesures 138 à 171.

Une mère désespérée, mesures 172 à 265.

Le rapt de la fille en rouge, mesures 266 à 312.

27 rue de la Forêt Noire, mesures 313 à 352.

Une brique formidable, mesures 353 à 369.

Bonjour ! Mad'moiselle, mesures 370 à 411.

Retrouvailles, mesures 412 à 473.

Dans une rue en pente douce, mesures 474 à la fin.

Musical score for a piece in 4/4 time, marked $\text{♩} = 106$. The score is written for a single melodic line on a grand staff. The key signature has one sharp (F#). The piece is divided into sections by numbered brackets: 1, 2, 3, 4, and 5.

Section 1 (measures 1-10) begins with a triplet of eighth notes (F#, A, C#) followed by a quarter rest, then a series of eighth and sixteenth notes with accents. Dynamics include *mf*.

Section 2 (measures 11-20) continues with eighth and sixteenth notes, including a triplet of eighth notes. Dynamics include *mf*.

Section 3 (measures 21-30) starts with a quarter rest, followed by eighth and sixteenth notes with accents. Dynamics include *mf* and *ff*.

Section 4 (measures 31-46) is marked "Binaire... alla brandebourgeois..." and "Ternaire". It features a 4-measure rest, followed by eighth and sixteenth notes with accents. Dynamics include *mf* and *f*. The tempo marking *sostenuto* is present.

Section 5 (measures 47-56) continues with eighth and sixteenth notes, including triplets. Dynamics include *ff* and *mf*.

The final section (measures 57-66) features a series of triplets of eighth notes. Dynamics include *mf* and *sfz*.

60 *ff* *sfz* *f* *ff* *fff* On tape !!!! *gliss.* 3 3 3 3 3 3 3

65 **6** *p subito* *mf* *p*

71 **7** *f* *< sf*

77 *mf* *f* *f*

81 *ff*

84 **8** $\text{♩} = 69$ **9** *mf* *mf* 7 2 3

100 **10** *mf* *mf* 3

108 **11** Coup de tonnerre ! *sffz* *mf* 2

115 **12** *mf* 6

124 $\text{♩} = 100$

128 **13** *ternaire* *mp*

132 *ff* *sfz*

136 $\text{♩} = 116$ **14** $\text{♩} = 88$ *ff* *p*

142 *mf* *f* *mf* *f*

146 **15** $\text{♩} = 84$ *Ternaire* *mf* *f* *sfz*

156 *f* *ff* **16** *2*

162 *f*

167 **17** *p*

171 *arco* **18** *Binaire !* $\text{♩} = 116$ *ff* *f*

175 **19** *f* **7**

185 **20** *Ternaire...Swing...* *f*

190 **21** *Binaire !* *f*

201 **22** *gliss.* *sfz* *Crissement de pneu* *fz* *con fuoco*

206

211 **23** *Ternaire...Swing...* *f*

217 **24** *Binaire !*

223 **25** *f*

228

233 **26**

236 **27** $\text{♩} = 104$ 10

247 **28** 6

256 **29** 3 *tr*

263 **30** $\text{♩} = 138$ 15 **31** Ternaire...

285 **32** *sfz*

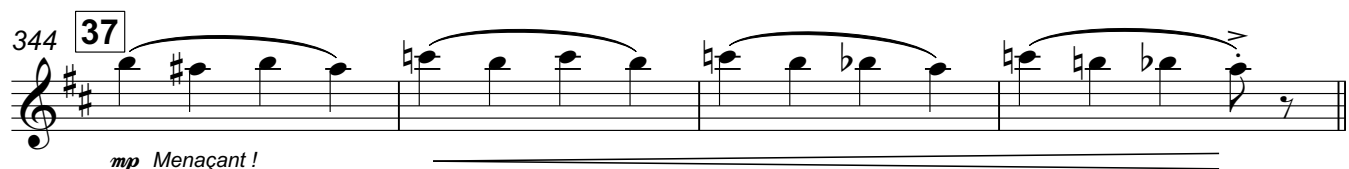
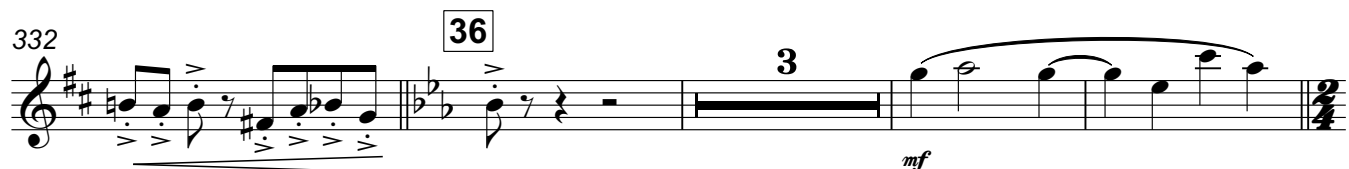
290 *mf*

293 **33** 3

297



L'istesso Tempo...

 $\text{♩} = 100$ 

352 39 $\text{♩} = 64$

356 40 mf mf

361 f sfz $\text{♩} = 60$

364 41 mf 3 3

367 mf $\text{♩} = 84$ Ternaire f

370 42 mf

374 43 f mf 4

381

386 44 f

389

392 45

397 *mf*

401 46 *mf*

403

406 rit. . . . ♩ = 120

412 47 *ff* *mf* *mf*

416 Binaire *mf*

422 48 *f* Ternaire !!! 2 Binaire !

428 49 2

433

438 **50** Ternaire !!!

442 **51** Binaire !!!

447 **3**

454 **52** $\text{♩} = 138$ Ternaire ! **11** **53**

mf legato molto & sostenuto

470 *rit.*

474 **54** $\text{♩} = 84$ **2**

480 **A Tempo** $\text{♩} = 92$

484 **55** **6**

492 **56** $\text{♩} = 100$

ff marcato

496 **57** $\text{♩} = 132$

tr

ff f < ff f < ff fff