

PARTITION

MUSIQUE PRIM
CHANT CHORAL
2020

BE - BOP ÉRA

Une enquête de John Chatterton

Batterie



radiofrance



l'école des loisirs



PARTITION

MUSIQUE PRIM
CHANT CHORAL
2020

Be-Bopéra

UNE ENQUÊTE DE JOHN CHATTERTON

Batterie

Un mur gris de la ville, mesures 1 à 83.

Les éclairagistes, mesures 84 à 137.

Chat noir chic et stylé, mesures 138 à 171.

Une mère désespérée, mesures 172 à 265.

Le rapt de la fille en rouge, mesures 266 à 312.

27 rue de la Forêt Noire, mesures 313 à 352.

Une brique formidable, mesures 353 à 369.

Bonjour ! Mad'moiselle, mesures 370 à 411.

Retrouvailles, mesures 412 à 473.

Dans une rue en pente douce, mesures 474 à la fin.

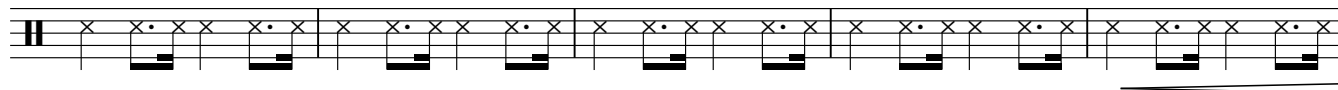
$\text{♩} = 106$
Ternaire...Jazzy !

Snare roll...

Tempo léger...



9



14



19

Fill **1**



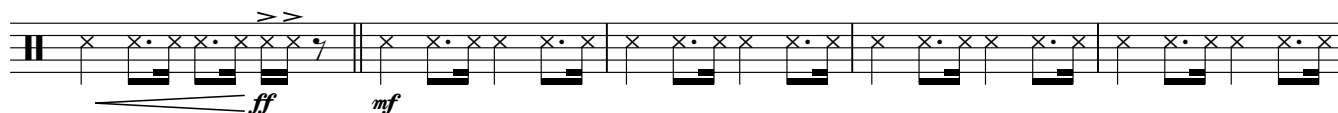
24

Fill



29

2



34 Binaire...alla brandebourgeois...

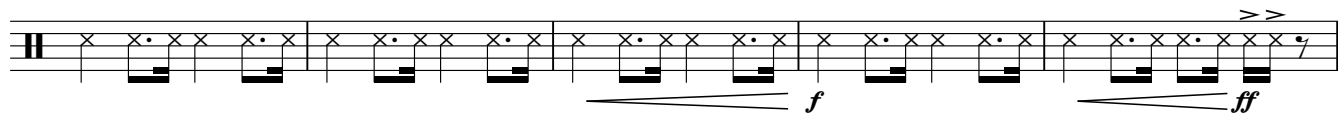
Ternaire



38 **3**



43

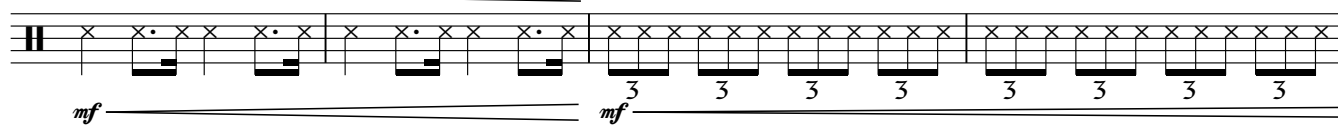


48 **4**



52

Fill...

56 **5**

60

Drums Solo

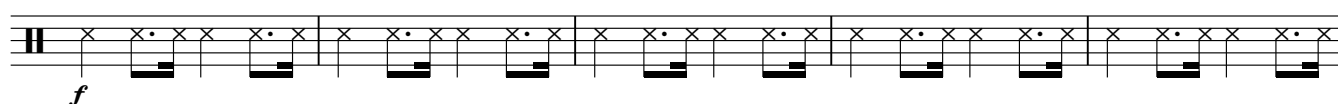
65 **6**

Tempo !



69

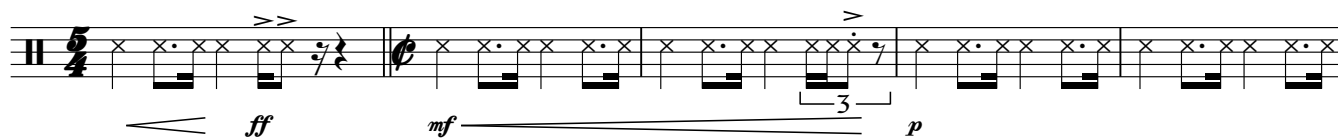
Fill...

73 **7**

78



83

8 $\text{♩} = 69$ 

88

Fill

93 **9**

97

Fill

101 **10**

105

Fill !

109 **11**

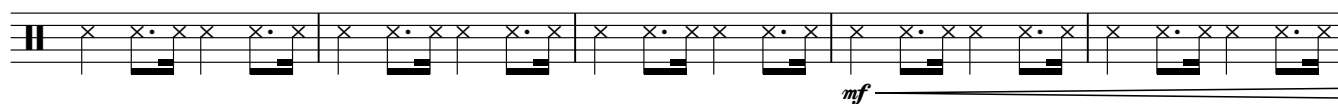
Coup de tonnerre !



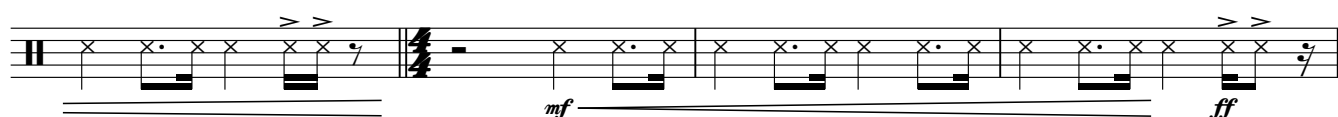
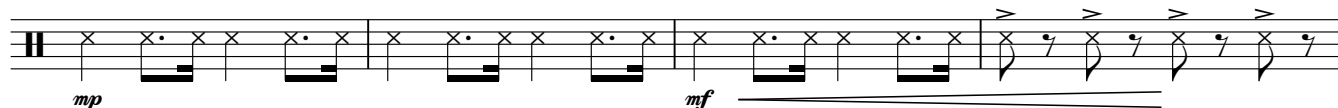
114

Fill **12**

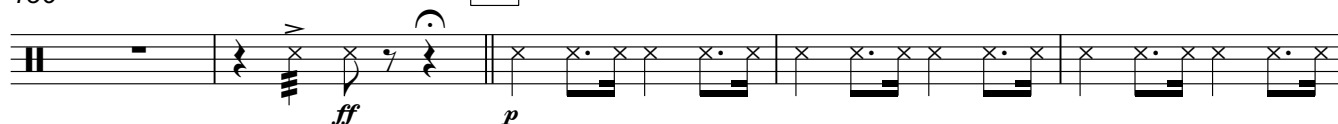
119



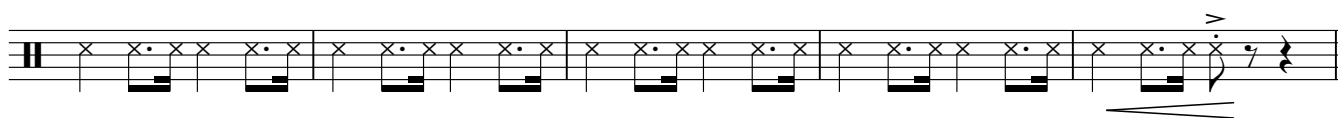
124

 $\text{♩} = 100$ 128 **13**

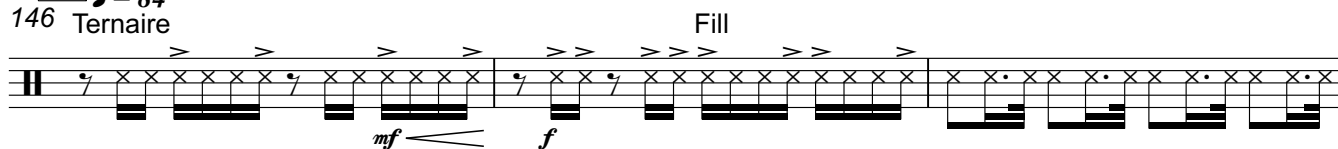
132

136 $\text{♩} = 116$ **14** $\text{♩} = 88$ 

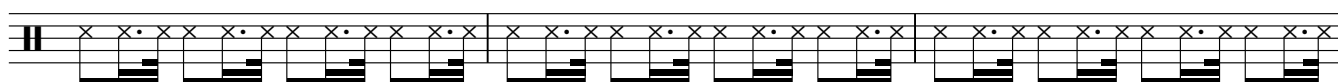
141



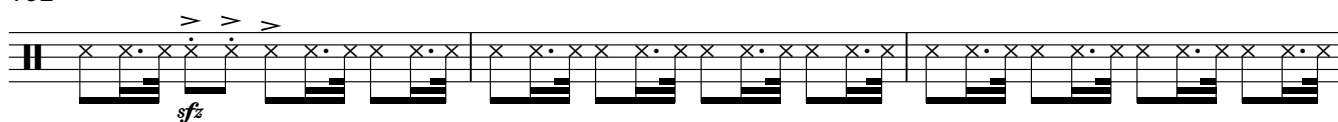
15 $\text{♩} = 84$
146 Ternaire



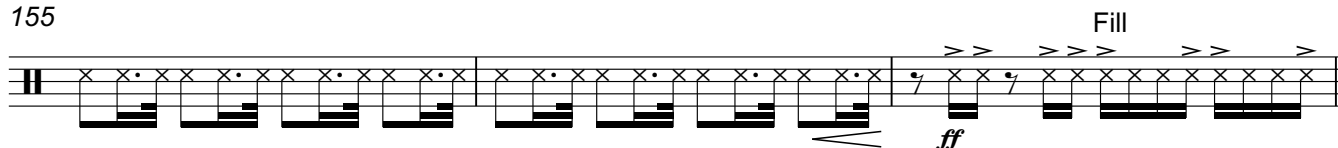
149



152 Coups de poing !



155



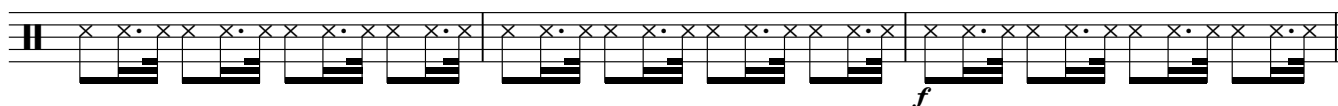
158 **16**



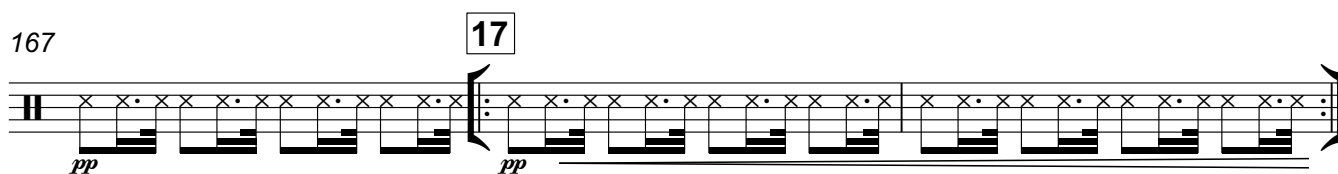
161



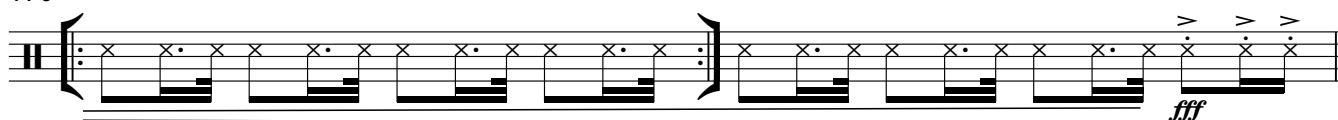
164



167



170



172 **18** $\text{♩} = 116$

f

177 **19**

181 *Fill*

185 **20**

f

189 *Ternaire...Swing...* *Fill*

193 **21**

197 *Binaire !* *Fill*

201 **22**

sfz *Crissement de pneus !*

205

209 *Fill* **23**

213 *Ternaire...Swing...*

Fill

217 **24**

222

Binaire ! **25**

Fill



226



230

233 **26**

236

27 *Ternaire...Swing...**♩ = 104*

240

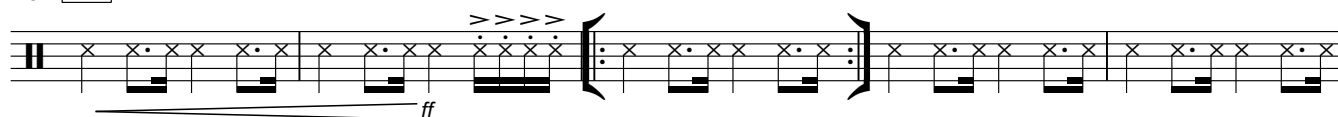


245

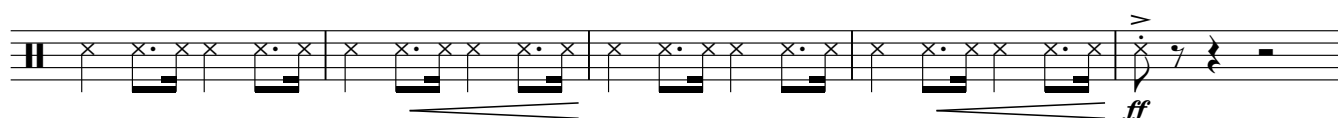
28

250

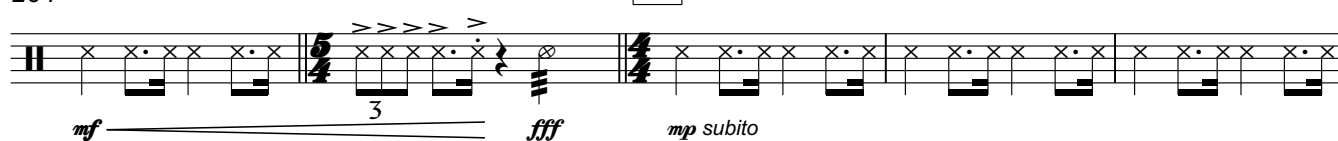


254 **29**

259



264

30 $\text{♩} = 138$ 

269

Fill



274

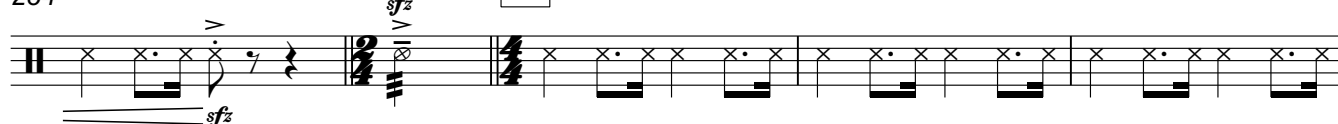


279

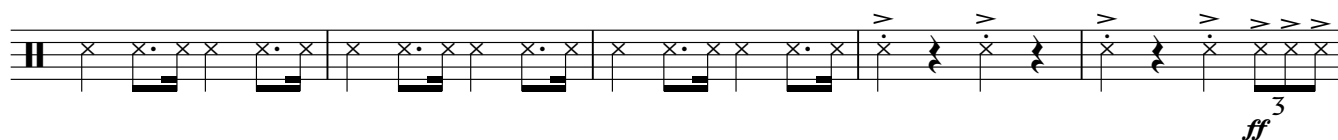
Fill

31

284

32

289



294

Fill

33

298

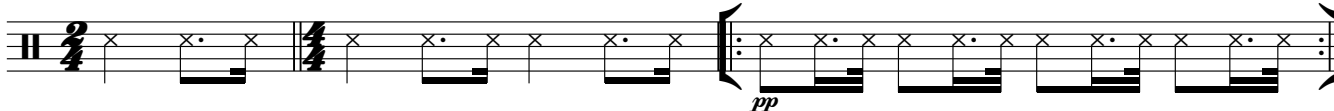


303



307

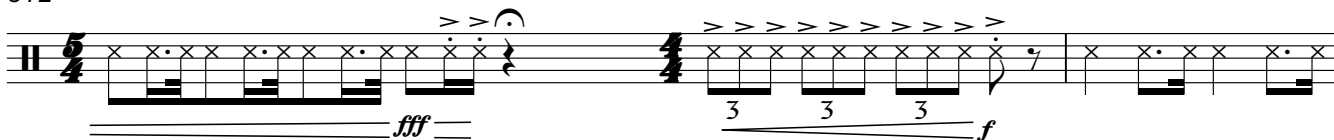
L'istesso Tempo...

310 **34**

Répéter 2X (soit 6 mesures...)

 $\text{♩} = 100$

312



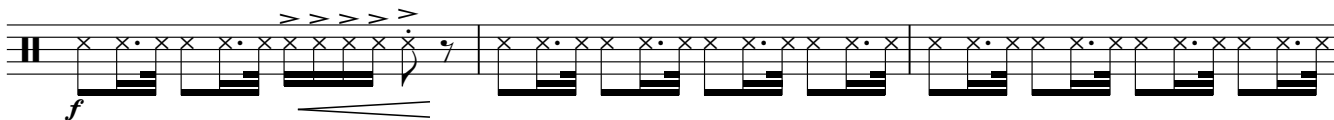
315



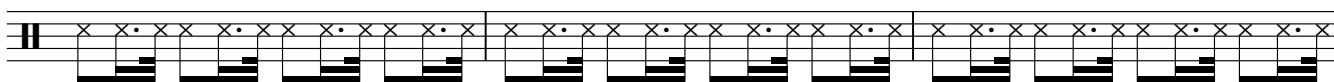
319

323 $\text{♩} = 80$ **35**

325

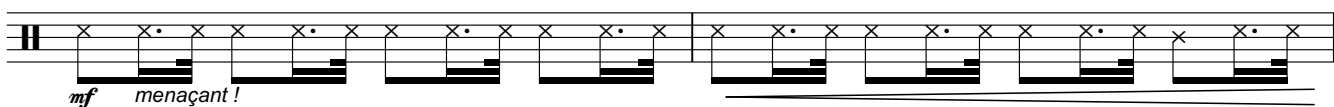


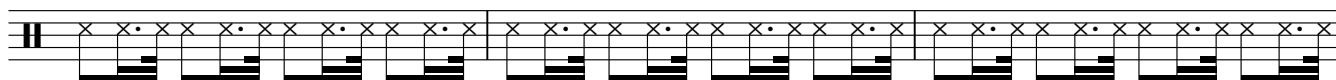
328



331

Fill



333 **36**

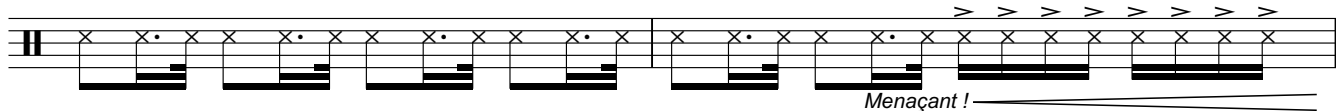
336



339



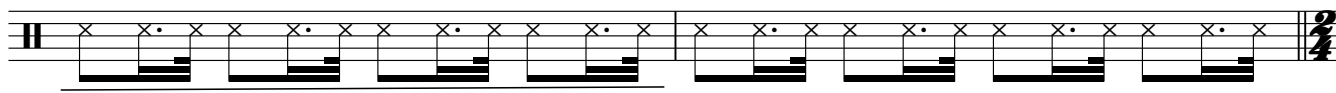
342

344 **37**

347

38

349



351

353 **39** ♩ = 64

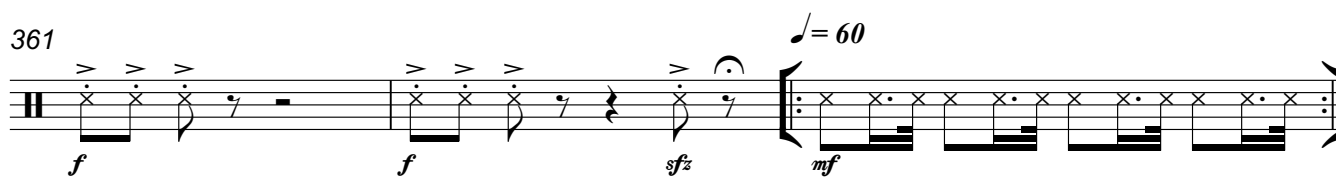
356

Fill

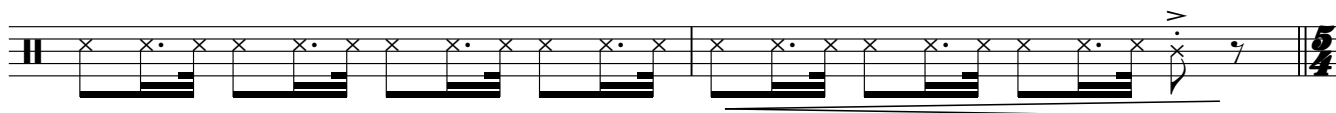
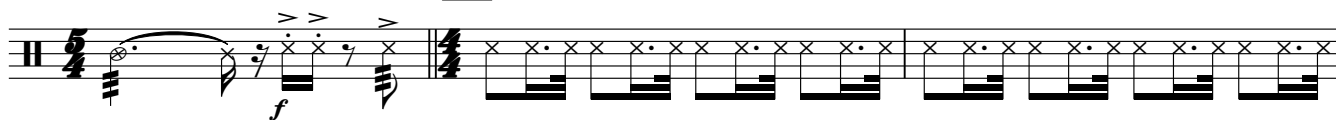


359 **40**

361

364 **41**

367

369 $\text{quarter note} = 84$ **42**

372

Fill

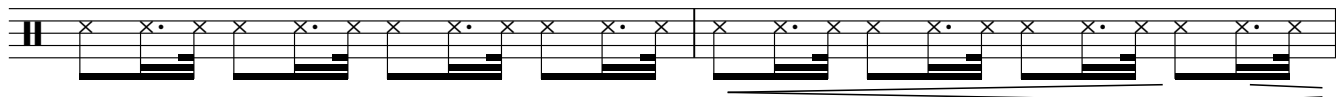
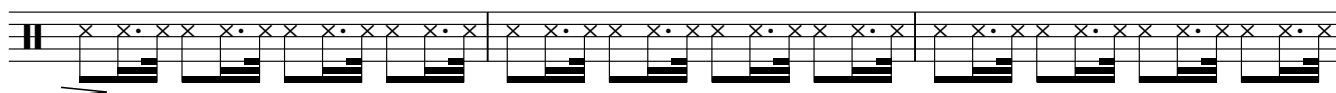


374

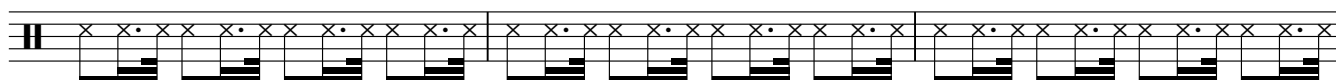


377

Fill

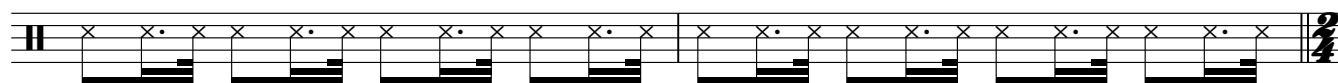
379 **43**

382



385

Fill

387 **44**

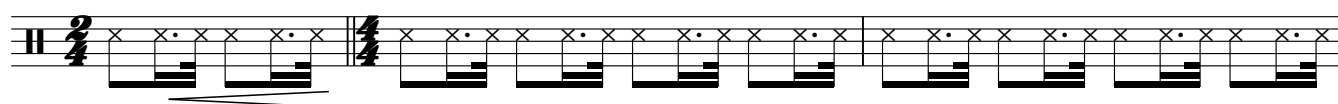
389

Fill



392

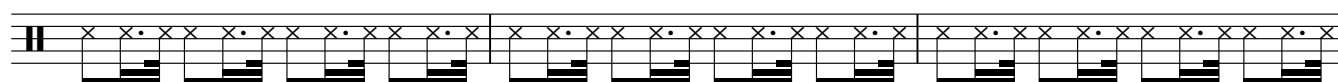
Fill

45

395

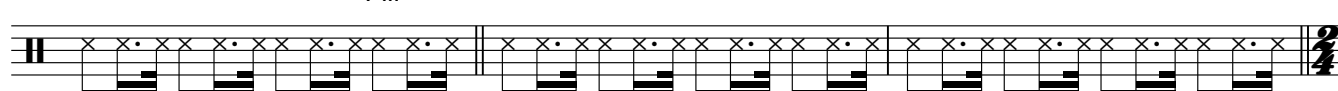


397



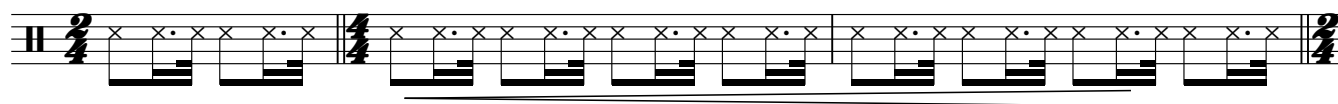
400

Fill

46

403

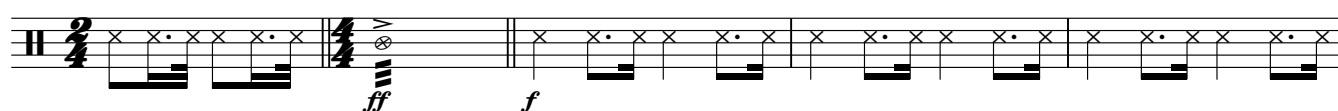
Fill



406

Fill

rit. - - - ♩ = 120



411

47

Binaire

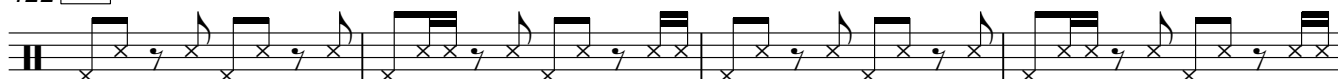


415

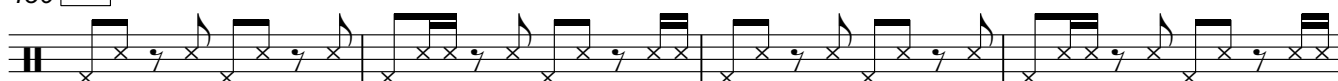


418 Ternaire !!!

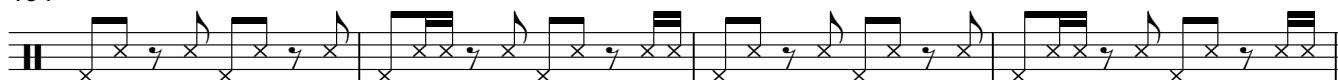
Binaire !

422 **48**

426

430 **49**

434

**50**

438 Ternaire !!!

**51**

442 Binaire !!!



446



450

**52** $\text{♩} = 138$

454 Ternaire !



459



464

Fill **53**

469



473

rit. . .

54 ♩ = 84

Fill



478

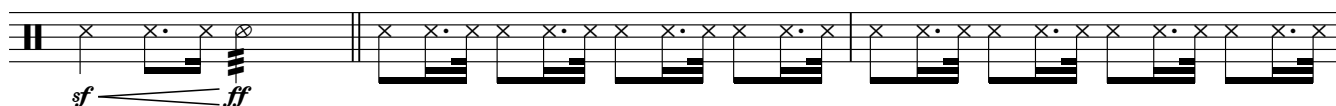
rit. . .

A Tempo



♩ = 92

483

55

486



489

492 **56** ♩ = 100

496

57 ♩ = 132