

PARTITION

MUSIQUE PRIM
CHANT CHORAL
2020

BE - BOP ÉRA

Une enquête de John Chatterton

Piano



radiofrance



l'école des loisirs



PARTITION

MUSIQUE PRIM
CHANT CHORAL
2020

Be-Bopéra

UNE ENQUÊTE DE JOHN CHATTERTON

Piano

Un mur gris de la ville, mesures 1 à 83.

Les éclairagistes, mesures 84 à 137.

Chat noir chic et stylé, mesures 138 à 171.

Une mère désespérée, mesures 172 à 265.

Le rapt de la fille en rouge, mesures 266 à 312.

27 rue de la Forêt Noire, mesures 313 à 352.

Une brique formidable, mesures 353 à 369.

Bonjour ! Mad'moiselle, mesures 370 à 411.

Retrouvailles, mesures 412 à 473.

Dans une rue en pente douce, mesures 474 à la fin.

$\text{♩} = 106$
Ternaïre...Jazzy !

Measures 1-21 are shown, with measure numbers 6, 10, 14, 18, and 21 indicated at the start of their respective systems. The score includes various musical notations such as triplets, slurs, and dynamic markings.

25

25 26 27

28

28 29

30 **2**

30 31 32

33 Binaire...alla brandebourgeois...

33 34

35

35 36 37

38 **3**

38 39 40

41

44

47

50

53

55

4

5

ff

mf

f

mf

59 *Drums solo...*

64 **6** *p subito*

69

72 **7** *mf*

75

79

83 8 $\text{♩} = 69$

86 *p* *alla be-bop !*

90

93 9

97

100 10

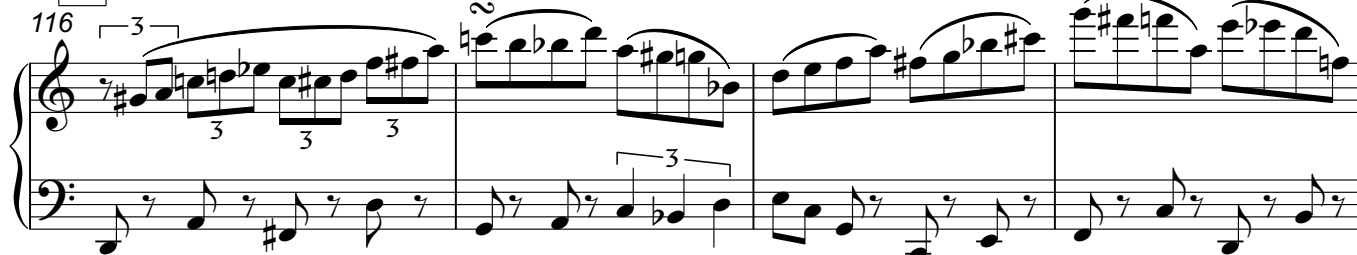
103



106

109 **11**

112

**12**

120



124 $\text{♩} = 100$

127 **13** *ternaire*

130

133

136 $\text{♩} = 116$ **14** *Plus lent*

141

145 15 $\text{♩} = 84$ Ternaire

mf *f*

147

f *mf*

150

f *mf*

153

f *mf*

156

f *ff* *mf*

158 **16**

161

164

167 **17**

170

172 **18**

$\text{♩} = 116$
Binaire !

176

19

System 19: Measures 176-178. The music is in 3/4 time, key of B-flat major. The right hand features a melody of eighth notes with a descending line, while the left hand provides a bass line of eighth notes.

179

System 19: Measures 179-181. The right hand continues the eighth-note melody, and the left hand maintains the bass line.

182

System 19: Measures 182-184. The right hand melody continues with some chromaticism, and the left hand bass line follows.

185 20

System 20: Measures 185-188. The right hand features a more complex eighth-note pattern with some triplets, and the left hand continues the bass line.

189

System 20: Measures 189-191. The right hand includes triplet markings over the eighth notes, and the left hand continues the bass line.

192

21

System 21: Measures 192-195. The right hand continues with triplet markings, and the left hand provides a steady bass line.

196

198 Binaire !

201 **22**

205

208

211 **23**

214

217 **24**

221

Binaire !

223 **25**

227

230

233 **26**

Measures 233-235. Treble staff: chords of eighth notes. Bass staff: eighth notes.

236 **27** $\text{♩} = 104$

Measures 236-238. Measure 237 contains triplets in both staves.

239

Measures 239-241. Measures 239 and 240 have triplets in the treble staff.

242

Measures 242-245. Treble staff: chords of eighth notes. Bass staff: eighth notes.

246

28

Measures 246-248. Measure 247 has triplets in the bass staff.

249

Measures 249-251. Measures 249 and 250 have triplets in the treble staff.

251

254 **29**

256

260

263

265 **30** ♩ = 138

mf *f* *ff* *mf* *mp subito* *leggero*

268

Measures 268-271: Treble and bass staves. Treble staff contains chords and eighth notes. Bass staff contains chords and eighth notes.

272

Measures 272-275: Treble and bass staves. Treble staff contains chords and eighth notes. Bass staff contains chords and eighth notes.

276

Measures 276-279: Treble and bass staves. Treble staff contains chords and eighth notes. Bass staff contains chords and eighth notes.

280

31

Measures 280-283: Treble and bass staves. Treble staff contains chords and eighth notes. Bass staff contains chords and eighth notes.

284

32

Measures 284-287: Treble and bass staves. Treble staff contains chords and eighth notes. Bass staff contains chords and eighth notes.

288

Measures 288-291: Treble and bass staves. Treble staff contains chords and eighth notes. Bass staff contains chords and eighth notes.

292

295 **33**

299

303

307

309

L'istesso Tempo...**34**

Répéter 2X (soit 6 mesures...)

311 $\text{♩} = 100$

313

316

319

322 $\text{♩} = 80$

324 Ternaire

325

327

329

331

333 **36**

335

337

339

342

344 **37**

347 **38**

349

351 39 $\text{♩} = 64$

354

357

359 40

361

363 $\text{♩} = 60$ 41

366

369 $\text{♩} = 84$
Ternaire

42

371

374

377

379 43

383

386

44

388

390

392

45

394

397

400

46

402

404

406

rit. - - - - - $\text{♩} = 120$

ff *mf*

410

47 Binaire

414

418 Ternaire !!!

420 Binaire !

422 48

425

427

430 **49**

434

50

438 Ternaire !!!

441

51 Binaire !!!

444

448

451

454 52 $\text{♩} = 138$
Ternaire !

458

462

466 53

470

473 *rit.* 54 ♩ = 84

ff *p subito*

476 *rit.*

480 **A Tempo** ♩ = 92

484 55

487 *f*

489

492 **56** $\text{♩} = 100$

ff marcato

494

498 **57** $\text{♩} = 132$

f *ff* *fff*